

Moscow Metro launches a new section of the Big Circle Line

04.01.2021, Moscow

Moscow continues to expand the Metro network: on April 1, two new stations were opened: Narodnoe Opolchenie and Mnyovniki. The stations became part of the Big Circle Line, which is currently under construction. This is the biggest transport project in Moscow in recent years. In addition, the BCL may become the longest circle line in the world: its length after completion will be 70 km. Thanks to the BCL, Metro comes to urban areas where it never existed before. Hundreds of thousands of Muscovites will be able to walk to the Metro station (previously, they had to use bus or tram), and for millions of Moscow residents, transport availability will improve.

On 1 April 2021, Mayor of Moscow Sergey Sobyenin opened stations Narodnoe Opolchenie and Mnyovniki of the Moscow Metro's Big Circle Line (Line 11).

The new stations were built as a part of the 5.5 kilometre-long western section of the Big Circle Line between stations Khoroshyovskaya and Mnyovniki and became the first Metro stations in the Khoroshyovo-Mnyovniki district.

The train frequency was enhanced. The peak hour headway at Savyolovskaya-Khoroshyovskaya section reduced from 2.45 minutes to 2.30 minutes which allows us to make 2.6 thousand additional passenger seats.

It is expected that 42.4 thousand passengers will use the new stations each day. In the future, the total ridership of the stations will increase to 95.4 thousand people per day.

Due to convenient transfers to Lines 2, 7, 9, etc. passengers may save up to 30-40 minutes on some routes.

With the launch of new stations, existing stations of Line 7, the busiest in Moscow Metro, are expected to be relieved: Polezhaevskaya – by up to 26%, Oktyabrskoe Pole – up to 20%, Schukinskaya – up to 11%. Khoroshyovo station of the Moscow Central Circle is expected to witness decrease as well – by up to 24%.

The new stations will attract up to 5.5 thousand new passengers that previously used buses, trams or cars. That is why we expect reduced congestion on the streets around the stations – up to 11% on some streets.



Contact center «Moskovskiy transport»
(Beeline, MegaFon, MTS)
+7 (495) 539-5454
transport.mos.ru, vk.com/transportmos,
mosmetro.ru

Service center «Moskovskiy transport»
Address: Staraya Basmannaya street 20, bld. 1,
1905 goda street 25.



Narodnoe Opolchenie station

The decoration of the station is dedicated to the people's militia of 1612, 1812 and 1941. In the station lobbies and on the track walls there are thematic drawings made with the help of ultraviolet printing.

The station's floor is lined with dark gray granite slabs that contrast with the aluminum-paneled walls. Stainless steel columns stand out organically against the background of matte panels. Part of the ceiling is finished with a horizontal aluminum rail.



Moscow
Transport

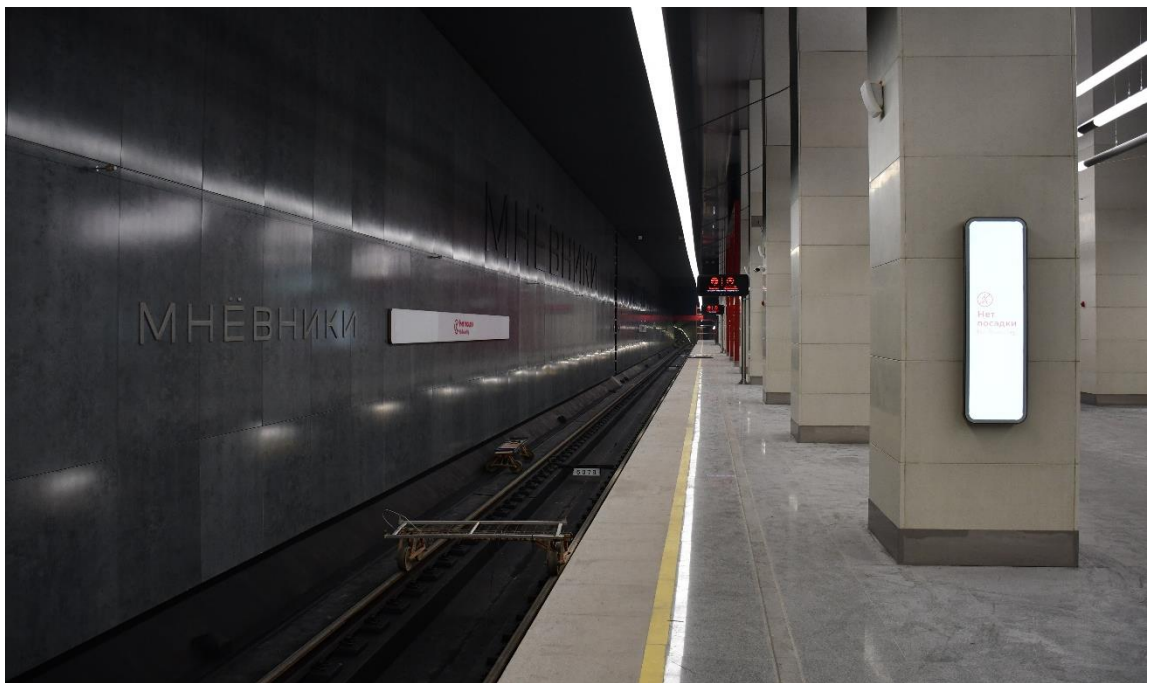


Moscow
Metro

Contact center «Moskovskiy transport»
(Beeline, MegaFon, MTS)
+7 (495) 539-5454
transport.mos.ru, vk.com/transportmos,
mosmetro.ru



Service center «Moskovskiy transport»
Address: Staraya Basmannaya street 20, bld. 1,
1905 goda street 25.



Mnyovniki station

The station complex is an underground structure with a height of a seven-story house. A similar-scale CSKA station was opened as part of the first section of the BCL.

The design of the station was chosen during an open competition, the winner of which was the architectural bureau of Timur Bashkayev. The main idea proposed by the authors of the project is a visual association of different parts of the station with free-standing red pillars (columns).

The walls and ceilings are lined with materials that imitate concrete surfaces in three main colors: light gray, gray and dark gray. The floor has a uniform coating of light gray granite.

An interesting feature of the architectural solution is a partial increase in the height of the entrance lobby and an atrium with natural light. Such techniques were typical for the early stations of the Moscow Metro.



Moscow
Transport



Moscow
Metro

Contact center «Moskovskiy transport»
(Beeline, MegaFon, MTS)
+7 (495) 539-5454
transport.mos.ru, vk.com/transportmos,
mosmetro.ru



Service center «Moskovskiy transport»
Address: Staraya Basmannaya street 20, bld. 1,
1905 goda street 25.